

# *STREPTOCOCCAL GROUPING KIT*

*A fast and reliable latex agglutination test for the identification of streptococcal groups A, B, C, D, F and G.*



•  
Unique, efficient enzyme extraction procedure giving best antigen yield anywhere.

•  
Sensitive reagents accurately identify all streptococcal groups, including group D in strains where D and G cause misidentification with other tests.

•  
Designed for convenience with colour coded reagent bottles packaged in a space-saving work station.

•  
Blue latex and disposable white slides for easy interpretation of results.

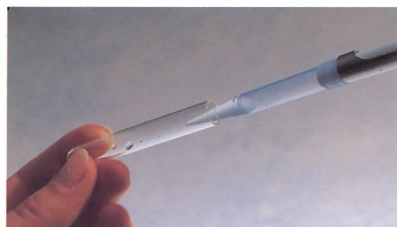
*Designed for convenience*



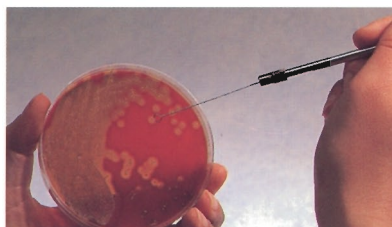
## *PRINCIPLE*

Specific carbohydrate antigens are extracted from streptococcal group cells. Blue latex particles coated with group specific antibodies will agglutinate in the presence of homologous antigen forming a lattice which is clearly visible as a positive result. In the absence of such antigen the latex particles remain in smooth suspension.

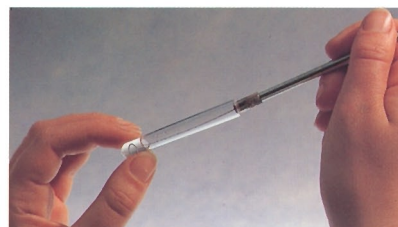
## *PROCEDURE*



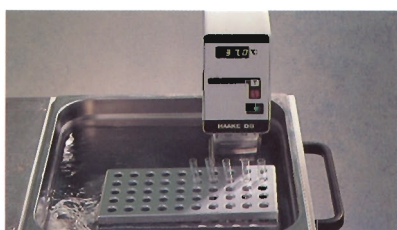
**1** Add 0.4ml Oxoid Extraction Enzyme to the test tube.



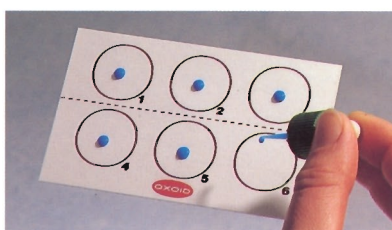
**2** Select 2-5 test colonies, avoiding contamination if culture is mixed.



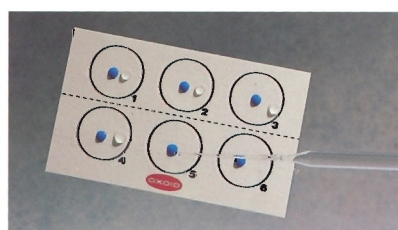
**3** Emulsify colonies in enzyme preparation.



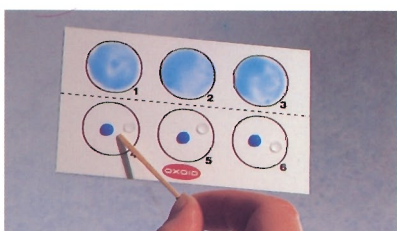
**4** Incubate for 10 minutes at 37°C, mixing well half-way through.



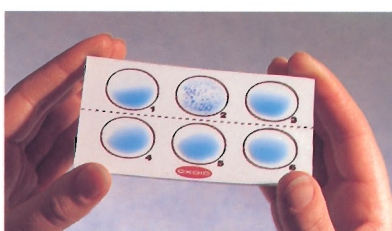
**5** Mix latex reagents thoroughly and dispense one drop from each onto the appropriately marked circle on the reaction slide.



**6** Using a Pasteur pipette, add one drop of extract to each of the six circles.



**7** With a separate mixing stick for each reagent mix the contents of each circle ensuring the entire area within each ring is covered.



**8** Gently rock the card in a circular motion for up to one minute and observe for agglutination.



**9** Dispose of reaction card safely into disinfectant.

## *CONTENTS OF KIT*

DR500 Disposable Reaction Cards  
DR586 Latex Grouping Reagent A  
DR587 Latex Grouping Reagent B  
DR588 Latex Grouping Reagent C  
DR589 Latex Grouping Reagent D

DR590 Latex Grouping Reagent F  
DR591 Latex Grouping Reagent G  
DR592 Polyvalent Positive Control  
DR593 Extraction Enzyme

All items are available separately

